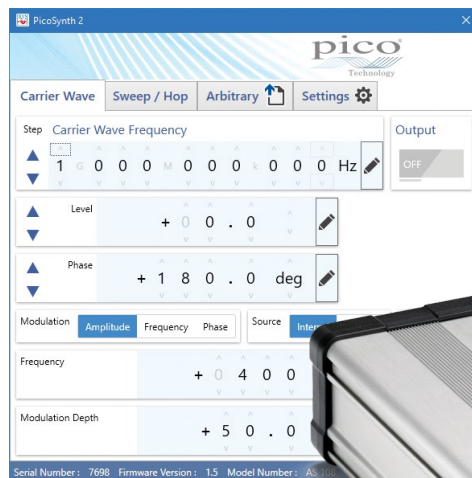


PicoSource™ AS108

8 GHz Agile Synthesizer



Professional and portable performance at low cost

- 300 kHz to 8 GHz operation
- 15 dBm to +15 dBm dynamic range
- Fast 55 μ s frequency settling time to 10 ppm
- Fast amplitude settling: < 25 μ s to 1 dB and < 200 μ s to 0.1 dB
- Sweep, hop and list frequency and level or phase and level
- 100 dBc/Hz phase noise typical at 1 GHz and 10 kHz offset
- FM, \emptyset M and AM modulation, internal sine or external input
- Configurable stand-alone operation mode
- External reference clock I/O and trigger I/O
- Compact and portable

- Use sweep lists to emulate schemes such as QPSK, QAM, ASK, FSK
- Adjustable dwell and trigger sweep or trigger next point modes
- Work in and convert units of measure to suit application
- Programming examples for LabVIEW, C, C#, Python, MATLAB
- Suited to bench, field and system integration applications
- USB-controlled from Windows PC and display or tablet
- Touch, mouse, keyboard or remote interface software (API included)
- Multi-unit operation with synchronized modulation, sweeps, hops and lists

Product overview – PicoSource AS108 Agile Synthesizer

The PicoSource™ AS108 Agile Synthesizer is designed to meet the needs of both benchtop and integrated module applications. Its broad 300 kHz to 8 GHz frequency range, fast settling and programmable phase, frequency and amplitude match it to a wide range of applications, with the added advantages of low cost, small footprint and 12 to 15 V power requirement. The AS108 has professional-grade performance that is effective in both static and parameter-agile applications, making it a bench or field instrument for developers, scientists, educators, students, and service and installation technicians. Its speed, external clock referencing, trigger capabilities and user programmable power-up mode all suit it to system integrations such as automated test, unmanned installations and multi-signal stimulus.

The AS108 is a full-function USB controlled vector (IQ) modulating signal synthesizer. It is supplied with a clean, easy and efficient user interface for controlling its amplitude, frequency and phase agility; including modulations, sweeps, hopping and list modes from Microsoft Windows. Multiple synthesizers can be controlled from multiple instances of the software running on a single controlling PC or device. Remote control is also possible using the API included.

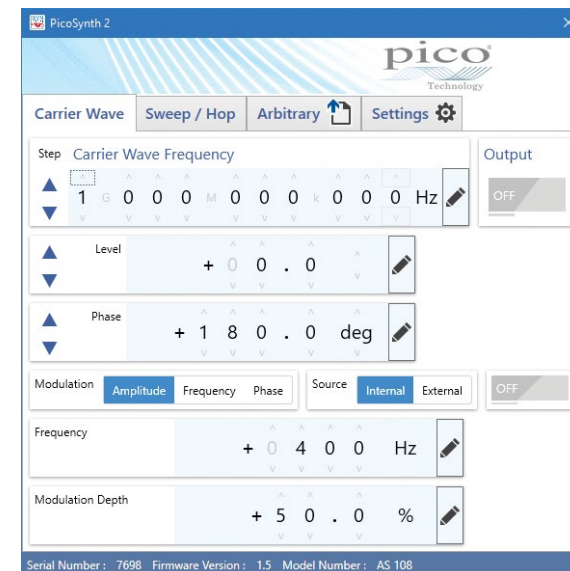


PicoSynth 2 software

The PicoSynth 2 software presents a clean, efficient, touchscreen-compatible user interface for direct and convenient access to synthesis parameters. These can be typed, scrolled or stepped by a configurable increment value, in a selectable unit of measure such as dBm, mW, V RMS, V pk-pk or degrees & radians. Its flexibility matches or exceeds that of the traditional control panel of a benchtop synthesizer.

The controls are presented in three independent parameter tabs, each of which holds separate settings for convenient switching of functionality:

- Carrier wave and basic modulations
- Sweep or hopping of parameters
- Arbitrary list of parameters



Carrier wave and basic modulations

Set carrier wave frequency, level and phase using typed values or scrolled digits, or by stepping by an increment of your choice, and then enable the output.

When required add frequency (FM), phase (ØM or PM) or amplitude (AM) modulation using internal sine modulation synthesis or an external DC-coupled source connected to the front-panel BNC interface. Modulations are derived from digital IQ modulation and the external trigger output (rear-panel BNC) is synchronous with the internal modulation source.

The screenshot shows the PicoSynth 2 software interface with several callout boxes highlighting key features:

- Three independent parameter tabs:** Fast and convenient switching between CW, sweep/hop and list modes. (Points to the Carrier Wave, Sweep / Hop, and Arbitrary tabs.)
- Carrier wave control parameters:** Type values, scroll digits or step by selected amount. (Points to the Carrier Wave Frequency, Level, and Phase fields.)
- Modulation controls:** Type, source and enable. (Points to the Modulation and Source tabs.)
- Internal modulation source parameters:** Frequency and depth. (Points to the Modulation Frequency and Modulation Depth fields.)
- Selectable units of measure:** Work in or convert to your chosen units of measure. (Points to the unit selection dropdown menu.)
- Typed entry of parameters:** With relevant standard multipliers. (Points to the numeric keypad and multiplier selection.)

The interface includes the following fields and controls:

- Carrier Wave Frequency:** 1 G 0 0 0 M 0 0 0 k 0 0 0 Hz
- Level:** + 0 1 . 0 0 0 mW
- Phase:** + 1 8 0 . 0 deg
- Modulation:** Amplitude, Frequency, Phase
- Source:** Internal, External
- Modulation Frequency:** + 0 4 0 0 Hz
- Modulation Depth:** + 5 0 . 0 %
- Output:** ON
- Typed entry:** 1000000023 Hz

Serial Number : 7698 Firmware Version : 1.5 Model Number : AS 108

Sweep or hop parameters

Set up sweeps and hops between two parameter values: start of sweep and end of sweep (stop). Either can be the higher value. Set the number of points in a sweep (between 2 and 10,001 points). The dwell time then defines a duration for which each point in the sweep will be output. PicoSynth calculates and displays the duration of the whole sweep and the linear step size between each point. A bidirectional sweep will sweep from the start to stop and back to start in completing a single sweep of the parameter. A hop is a limited case of sweep in which there are only two parameter values that are alternately output.

The AS108 can sweep or hop the frequency, level or phase parameter. It can also sweep or hop two parameters at the same time: frequency and level, or phase and level. This allows, for instance, a simple linear flatness or loss-compensating profile to be applied to a sweep or hop, perhaps increasing output level as frequency increases. The example shown applies a 5 dBm increase in level as the frequency sweeps from 1 GHz to 2 GHz.

Sweeps and hops can be synchronized to external events and instruments using the external trigger input and output (rear panel BNCs) or software trigger. Trigger occurs at, or initiates, a sweep start or next point in sweep. This synchronization flexibility can be of particular value to high-speed system sequencing in, for example, high-speed test.

https://www.eisco.com/product.php?id_product=5760

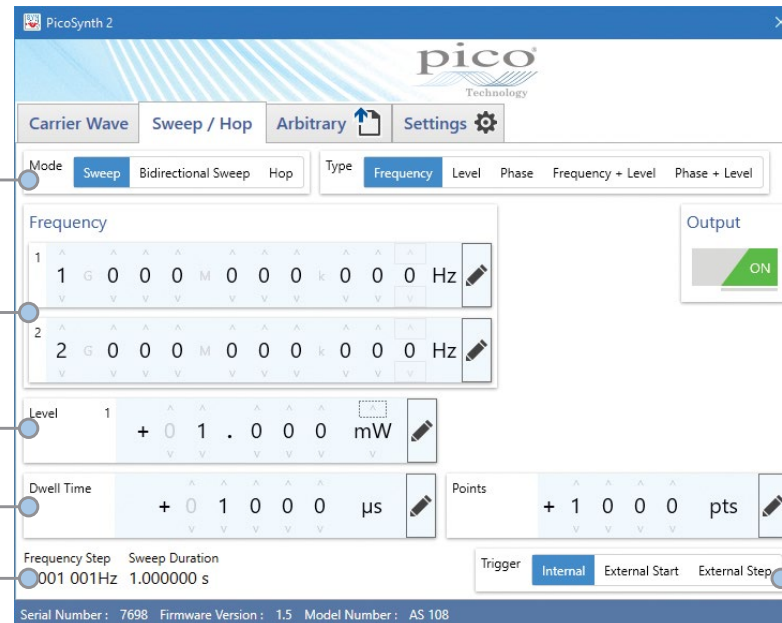
Select sweep or hop mode and type
Single and dual parameter

Frequency start and stop values

Level start and stop values

Set number of sweep points and the dwell period between them

Resulting step sizes and sweep duration

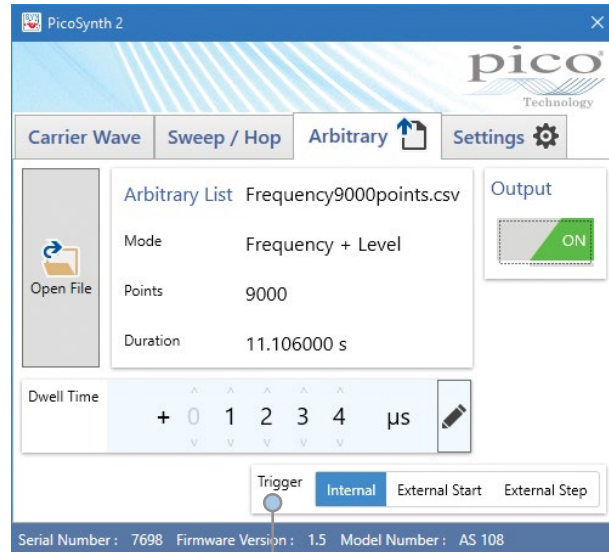


Synchronize the sweep to a trigger
Internal clock, external input or software trigger sources.
Trigger a sweep or trigger next point in sweep.

Arbitrary parameter list

Import a parameter list file to generate an arbitrary sequence of frequency/level or phase/level points. The file is in a straightforward comma-separated values (CSV) format that you can create using any text editor or export from a spreadsheet program.

PicoSynth 2 shows a summary of the file contents to help you verify that you have selected the correct file. You can program the dwell time (time between points) and trigger mode.



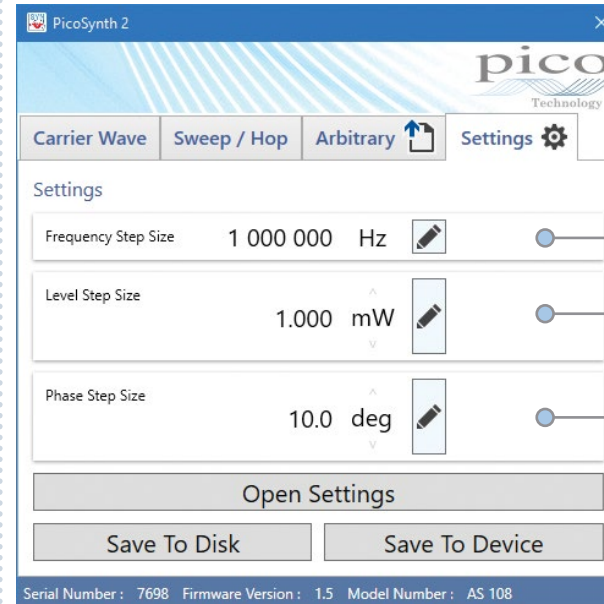
Trigger mode
Internal: run continuously with the specified dwell time.
External Start: run the whole file, with the specified dwell time, after each trigger event.
External Step: generate one point for each trigger event (ignoring dwell time setting).

	A	B	C	D	E
1	Level	Frequency	Phase	Dwell	Mode
2	0	10000001	0	1234	FrequencyAndLevel
3	0	10000002	0		
4	0	10000003	0		
5	0	10000004	0		
6	0	10000005	0		
7	0	10000006	0		
8	0	10000007	0		
9	0	10000008	0		
10	0	10000009	0		
11	0	10000010	0		
12	0	10000011	90		
13	0	10000012	90		
14	0	10000013	90		
15	0	10000014	90		
16	0	10000015	90		
17	0	10000016	90		
18	0	10000017	90		
19	0	10000018	90		
20	0	10000019	90		
21	0	10000020	90		
22	0	10000021	180		
23	0	10000022	180		
24	0	10000023	180		
25	0	10000024	180		
26	0	10000025	180		
27	0	10000026	180		
28	0	10000027	180		
29	0	10000028	180		
30	0	10000029	180		
31	0	10000030	180		
32	0	10000031	270		
33	0	10000032	270		
34	0	10000033	270		
35	0	10000034	270		
36	0	10000035	270		
37	0	10000036	270		
38	0	10000037	270		
39	0	10000038	270		
40	0	10000039	270		
41	0	10000040	270		

Save, recall and other settings

Parameter step increment values and the saving and recall of user settings are addressed under the **Settings** tab.

You can also load modified power-up settings from here to write to the device, allowing the signal source to power up in a known state without further connection or control over USB.



Frequency step size
Used by frequency up/down controls

Level step size
Used by level up/down controls

Phase step size
Used by phase up/down controls

Remote control operation

The PicoSource AS108 is supplied with a DLL that allows you to control the device from C and C-compatible languages and applications such as C++, C#, Python, Keysight VEE, National Instruments LabVIEW and MathWorks MATLAB.

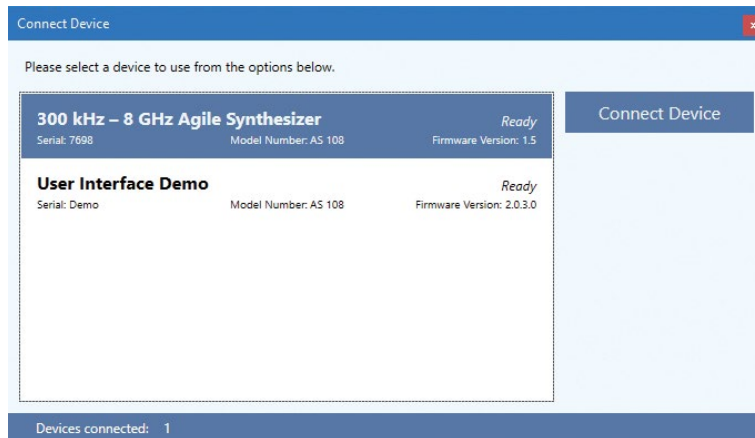
See the *PicoSource AS108 Programmer's Guide* for details.

Multiple device operation

You can control multiple AS108 signal synthesizers from a single PC by running multiple instances of the PicoSynth 2 software. Each time you start a new instance of PicoSynth 2, it will list all compatible connected devices that are not yet being controlled. You can then select any device in the list for connection.

Demonstration mode

The "User Interface Demo" device is always available in this list and allows PicoSynth 2 to run for demonstration purposes without a connected device. You can use this mode to try out the software before buying a device. The software is available for download and trial at www.picotech.com.



Specifications

Parameter	Applicable range and values		Condition
General			
Standard conditions are ambient temperature of between 15°C and 30°C, 20 minutes after power-up.			
Carrier wave			
Frequency range	300 kHz to 8.192 GHz		
Frequency resolution	300 kHz to 125 MHz	0.1 Hz	
	> 125 MHz to 4 GHz	10 Hz	
	> 4 GHz	20 Hz	
Frequency settling time	to ± 10 ppm	55 μ s maximum	50 μ s typical
Frequency accuracy (internal reference)	± 5 ppm		
Output power range	-15 dBm to +15 dBm		
Output power resolution	0.1 dBm		
Output power setting accuracy	± 1.5 dB		
Output match (VSWR)	1.8:1 maximum	1.4:1 typical	
Output amplitude settling time	to ± 1 dB	25 μ s maximum	
	to ± 0.1 dB	200 μ s maximum	
Output protection			

Phase noise at 10 kHz offset	1 GHz 2 GHz 4 GHz 8 GHz	-98 dBc/Hz maximum -94 dBc/Hz maximum -88 dBc/Hz maximum -83 dBc/Hz maximum	-100 dBc/Hz typical -96 dBc/Hz typical -90 dBc/Hz typical -85 dBc/Hz typical	
	<p>8GHz Synth, 15dBm v HP8665A @ 1GHz</p> <p>Agilent E5500 Carrier: 1E+9 Hz 02 Aug 2018 21:27:56 - 21:31:23</p> <p>L(f) [dBc / Hz] vs f [Hz]</p>			Measured phase noise at 1 GHz
Harmonics	-20 dBc maximum	-26 dBc typical		Output power set to +10 dBm
Sub-harmonics	-40 dBc maximum	-46 dBc typical		Output power set to +10 dBm
Spurious	-50 dBc maximum	-60 dBc typical		Output power set to +10 dBm
Modulation				
Frequency range internal sine source	10 Hz to 5 kHz			
Frequency resolution and accuracy	1 Hz resolution ± 0.1% accuracy			
AM depth range	For carrier at 0 dBm 0 dBm to 9 dBm	5% minimum 5% minimum	90% maximum 50% maximum	
FM deviation	2% carrier frequency or 200 kHz maximum			
Harmonic distortions	-?? dBc 2nd harmonic -?? dBc 2nd harmonic	-?? dBc 3rd harmonic -?? dBc 3rd harmonic		AM 50% depth, FM 1% carrier deviation
External modulation input bandwidth	DC coupled to 10 kHz			
External modulation input sampling	20 kS/s at 12 bit resolution			
External modulation input sensitivity	BNC(f) 600 Ω ±1 Vpk typical			for selected depth or deviation
External modulation input protection	1 V pk			

Synchronization I/O				
Parameter	Interface and values			Condition
Internal 10 MHz reference output	BNC(f) 50 Ω	-3 dBm minimum	0 dBm typical	Into 50 Ω
External reference input	BNC(f) 50 Ω	-6 dBm sensitivity	6 dBm maximum	
External reference lock range	±5 ppm			
Trigger input threshold voltage	BNC(f) 1 kΩ	0.5 V minimum	2.6 V maximum	
Trigger output logic levels	BNC(f)	Low 0.5 V maximum	High 3.6 V minimum	Into 1 kΩ
Trigger output rise and fall times	40 ns maximum			
Trigger I/O protection				
Miscellaneous and environmental specifications				
Parameter	Applicable range, values and standards			Condition
Power requirements	+12 V to +15 V DC, 12 W, 2.1 mm jack, centre pin positive			
Control interface	USB 2.0			
Dimensions	W 173 mm x L 232 mm x H 56 mm			Excluding connectors
Weight	1.78 kg			
Operating environment	+10°C to +40°C, 80% RH non-condensing, Pollution Degree II			
Storage environment	-20°C to +50°C, 80% RH non-condensing, Pollution Degree II			
Vibration	0.5 g, 5 Hz to 300 Hz			
Safety	Declared conforming to: EN61010-1:2010 and EN61010-2-030:2010 Safety requirements for electrical equipment for measurement, control and laboratory use, general requirements and for testing and measuring circuits.			
EMC	Declared conforming to: EN61326-1:2013 Electrical equipment for measurement, control and laboratory use - EMC requirements. Group 1, Class B. (Emissions) EN61326-1:2013 Electrical equipment for measurement, control and laboratory use - EMC requirements. Basic Environment. (Immunity) EN61326-2-1:2013 Part 2-1: Test configurations, operational conditions and performance criteria for sensitive test and measurement equipment for unprotected applications. CFR 47 Code of Federal Regulations FCC: part 15 Subpart B – Frequency devices – unintentional radiators. Radiated emissions standard. Class A.			

Ordering information

Order code	Description	USD*	EUR*	GBP*
PQ163	PicoSource AS108 8 GHz Agile Synthesizer	5875	4995	4125
TA314	Inter-series adaptor 18 GHz 50 Ω SMA(f)–N(m)	119	99	81
TA181	Attenuator 3 dB 10 GHz 50 Ω SMA(m–f)	75	67	53
TA261	Attenuator 6 dB 10 GHz 50 Ω SMA(m–f)	75	67	53
TA262	Attenuator 10 dB 10 GHz 50 Ω SMA(m–f)	75	67	53
TA173	Attenuator 20 dB 10 GHz 50 Ω SMA(m–f)	75	67	53
TA265	Precision sleeved coaxial cable 30 cm 1.3 dB @ 13 GHz	65	58	46
TA312	Precision sleeved coaxial cable 60 cm 2.2 dB @ 13 GHz	70	59	47
TA358	Dual-break torque wrench N-type 1 N·m / 8.85 in·lb	199	169	139
TA356	Dual-break torque wrench SMA / PC3.5 / K-type, 1 N·m / 8.85 in·lb	199	169	139

* Prices are correct at the time of publication. Sales taxes not included. Please contact Pico for the latest prices before ordering.

More RF products from Pico...

PicoScope 9000 Series
25 GHz
sampling oscilloscopes



PicoSource PG900 Series
40 ps
pulse generators



PicoVNA 106
6 GHz
vector network analyzer



PicoConnect
9 GHz
passive probes



UK global headquarters:

Pico Technology
James House
Colmworth Business Park
St. Neots
Cambridgeshire
PE19 8YP
United Kingdom

☎ +44 (0) 1480 396 395
☎ +44 (0) 1480 396 296
✉ sales@picotech.com

North America regional office:

Pico Technology
320 N Glenwood Blvd
Tyler
Texas 75702
United States

☎ +1 800 591 2796
☎ +1 620 272 0981
✉ sales@picotech.com

Asia-Pacific regional office:

Pico Technology
Room 2252, 22/F, Centro
568 Hengfeng Road
Zhabei District
Shanghai 200070
PR China

☎ +86 21 2226-5152
✉ pico.china@picotech.com

ELSO
riešenia na presné meranie

Elsophilips Service
Jilemnického 2; 911 01 Trenčín
tel: +421 32 6582410
fax: +421 32 6582592
email: elso@elso.sk
web: www.elso.sk

Errors and omissions excepted. *Pico Technology* is a registered trademark of Pico Technology Ltd. *PicoSource* is a trademark of Pico Technology Ltd.

LabVIEW is a trademark of National Instruments Corporation. *MATLAB* is a registered trademark of The MathWorks, Inc. *Windows* and *Excel* are registered trademarks of Microsoft Corporation in the United States and other countries.

MM072.en-1. Copyright © 2018 Pico Technology Ltd. All rights reserved.



www.picotech.com



Pico Technology



@LifeAtPico



@picotechnologyltd



Pico Technology



@picotech